



BAR ONE Unipod

Standard Equipment

Integrated disc spring brake
Go Call - visual entry invitation feature
Unobstructed passage including automatic reset

Drive Mechanism

Magnetic Direct Drive

Operating Environment

Indoor
Outdoor*
-25°C to +60°C / -13°F to 140°F *

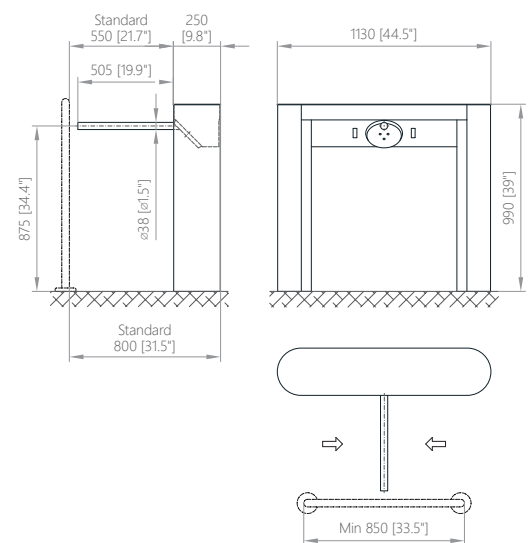
Safety & Security detection

Climb over / crawl under*
Permanently blocked mode
Emergency mode

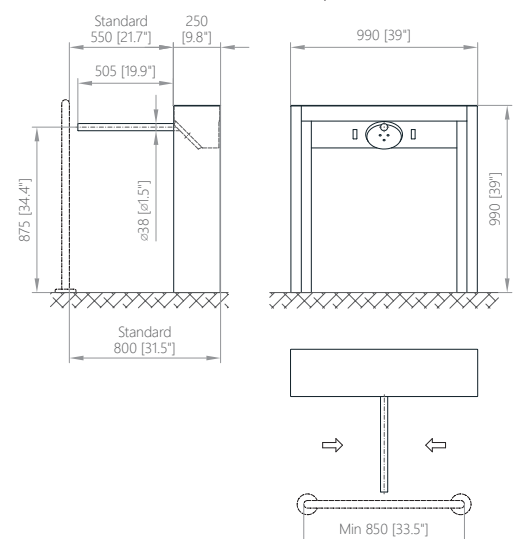
Optional Accessories

RFID reader bracket (top / flush mounted)
Access Light / Lane Light
WAV player
USB convertor / Ethernet convertor
EasyTouch / TouchPanel / T-MON sw
SuperCap (emergency power back-up)
Alternative surface finishes
Optional black glass top lid
Ramp LT
Arm protector

BAR One-G Unipod



BAR One-R Unipod



Cabinet height	990 mm / 39.0"
Cabinet length (BAR One-G)	1 130 mm / 44.5"
Cabinet length (BAR One-R)	990 mm / 39.0"
Cabinet width	250 mm / 9.8"
Passage width	max 570 mm / max 22.4"
Cabinet	Brushed stainless steel
Top Lid	Brushed stainless steel
Barrier	Single arm / Brushed stainless steel

*Optional